

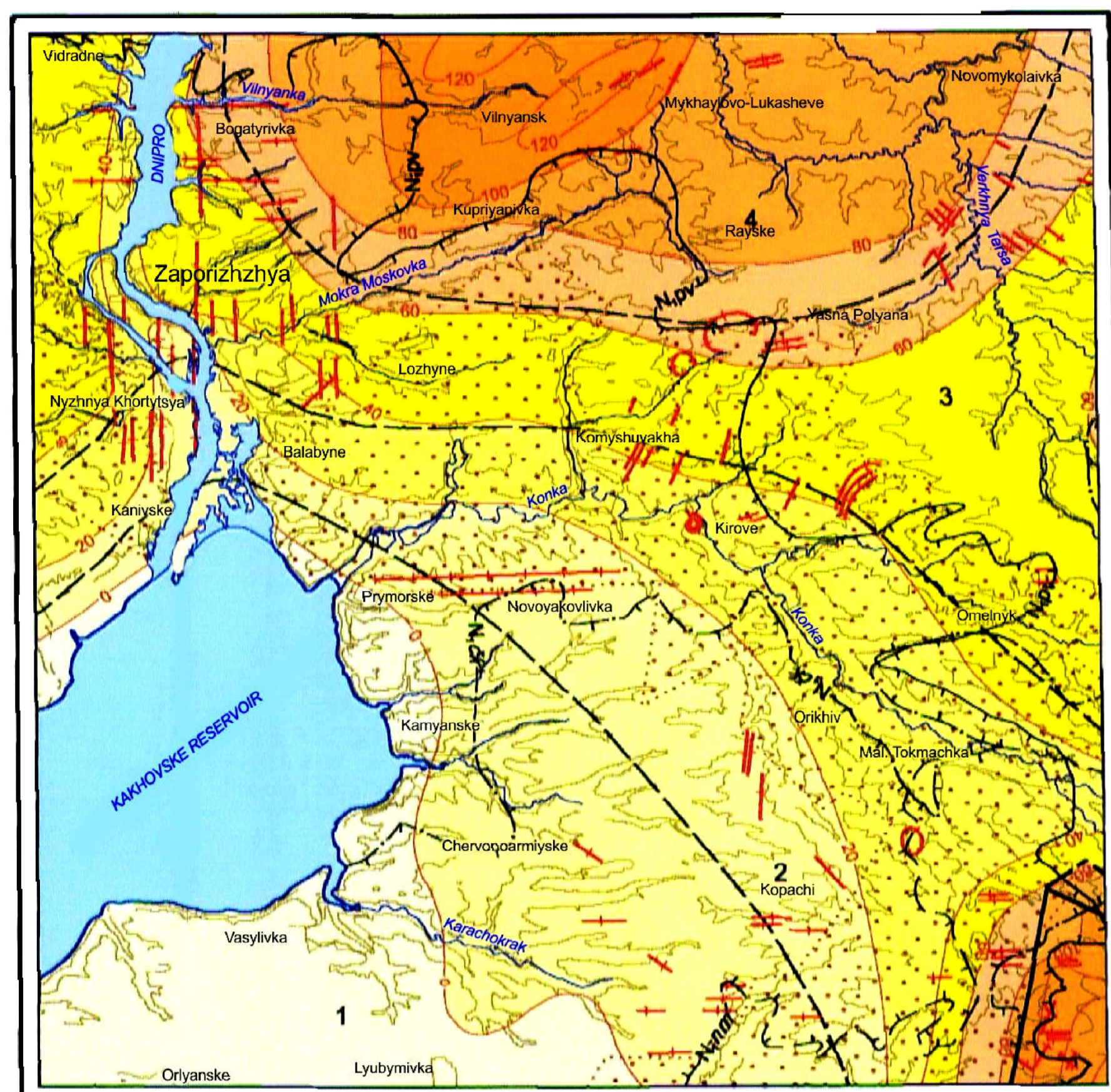
STATE GEOLOGICAL MAP OF UKRAINE

Scale 1:200 000

GEOLOGICAL MAP AND MAP OF MINERAL RESOURCES OF QUATERNARY SEDIMENTS

Central-Ukrainian Series
L-36-VI (Zaporizhzhya)

NEOTECTONIC SCHEME

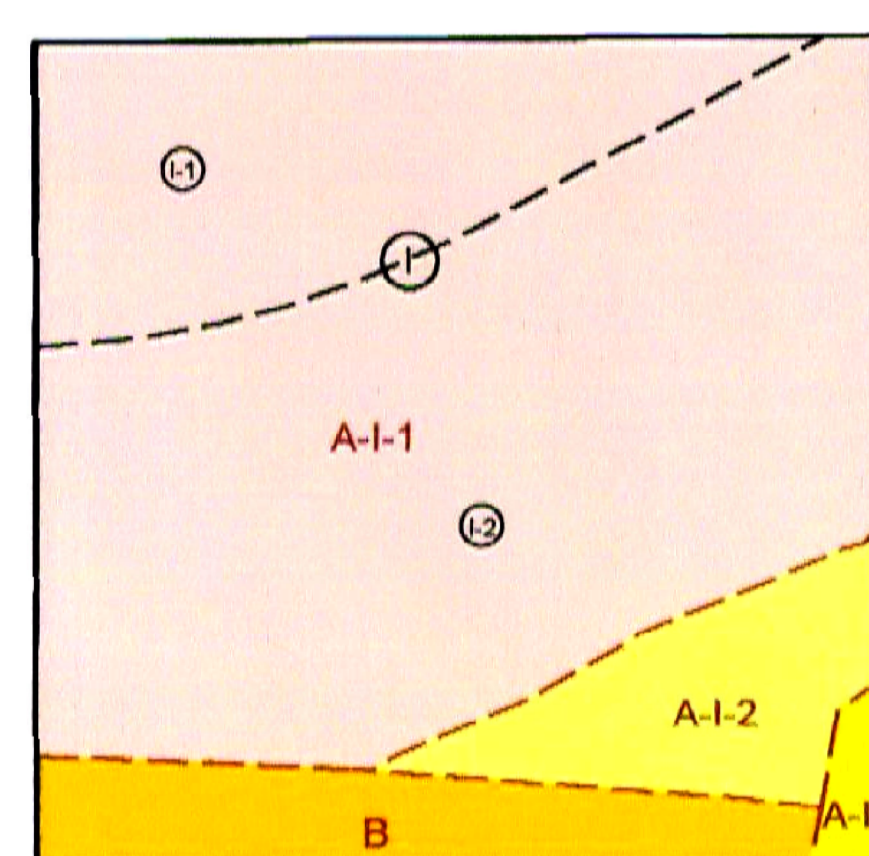


1:500 000
5 kilometres in 1 centimetre

LEGEND

- Cumulative magnitude of Neogene-Quaternary motions, m
 - 100-200
 - 80-100
 - 60-80
 - 40-60
- Cumulative magnitude isolines
- Boundaries and age of Neogene marine sediments modern distribution
 - N_{pr}
 - N_{nm}
 - N_{ps}
 - N_{ck}
- Local sites activated in Neogene and their numbers
 - Local uplifts: Vityanske (4), Kuytysivske (5)
 - Local subsidences: Vasylyvske (1), Orikyvske (2), Zaporizke (3)
- Local sites activated over Quaternary period
- Faults activated over recent time: major (a), and minor (b)
- Lineaments distinguished by satellite image analysis and thought to be faults
- Concentric-shape morphostructures

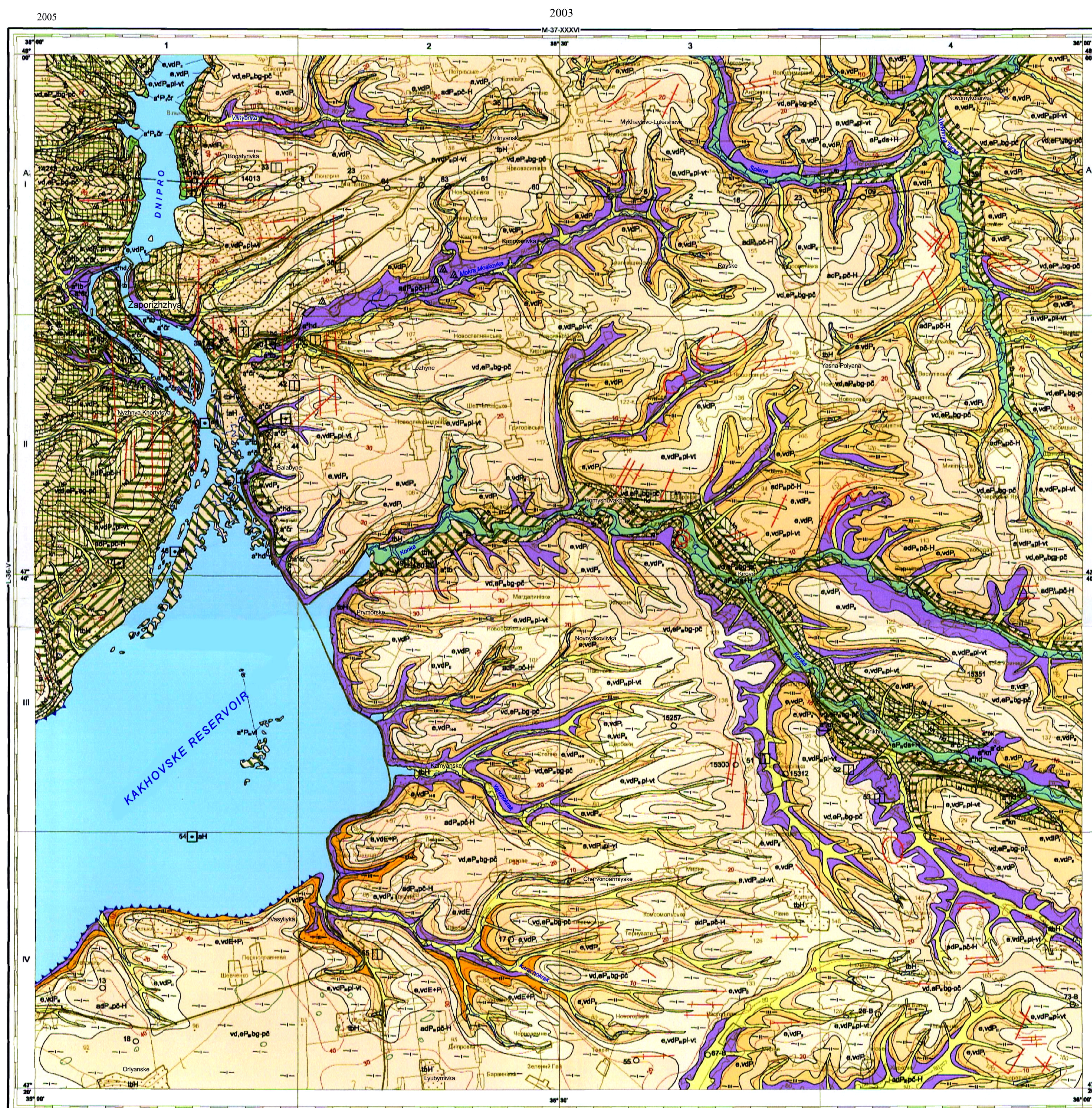
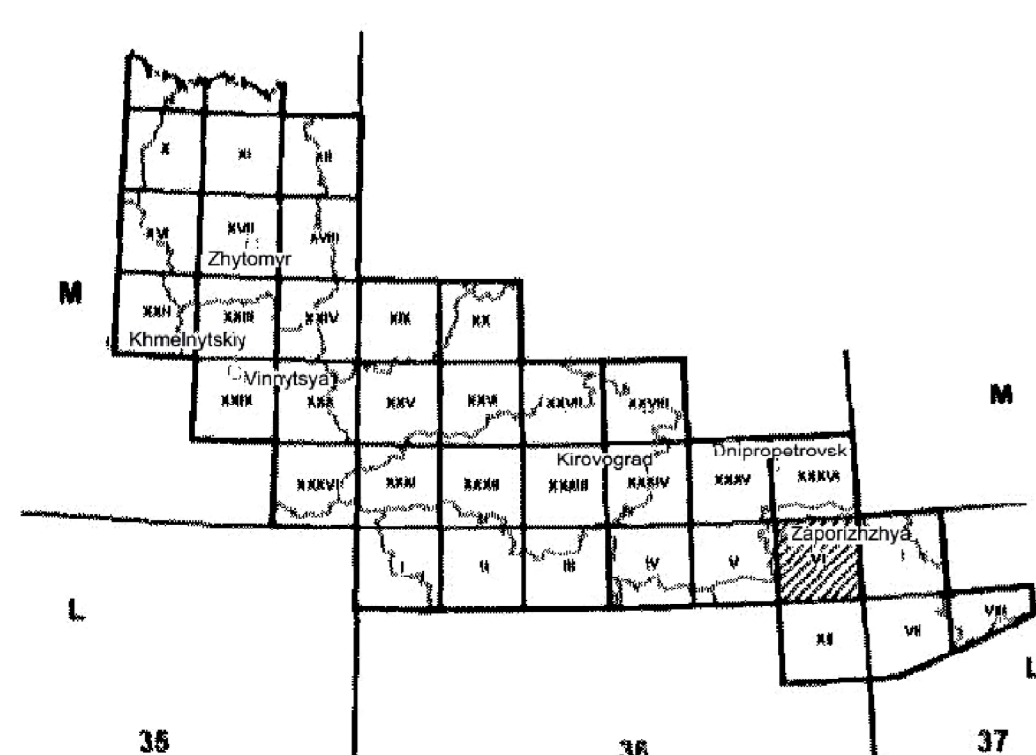
QUATERNARY SEDIMENTS ZONATION SKETCH



LEGEND

- Off-glacier zone
- Zone of north loess areas
- Zone of south loess areas
- Boundary between sub-zones
- Boundaries of typologic stratigraphic-paleolandscape zonation of Quaternary sediments
- Gulyajivska accumulative partitioned loess plain on Neogene-Paleogene base
- Gulyajivska accumulative partitioned loess plain on Neogene-Cretaceous base
- Przyzovska inclined partitioned accumulative-denudation plain of Precambrian base
- Tokmatska gently-inclined loess plain
- Subdivision indexes of stratigraphic-paleolandscape zonation

LOCATION SKETCH OF CENTRAL-UKRAINIAN MAP SHEETS



1:200 000
2 kilometres in 1 centimetre

Solid horizontals are put through 40 metres

GEOLOGICAL CROSS-SECTION BY LINE A₁-A₂

Scales: horizontal 1:200 000
vertical 1:2 000

The map is created in the State Enterprise "Pivdengeologiya" (Dnipropetrovska Complex Geological Group) in order of the State Geological Survey of Ukraine on January 23, 2003 (Protocol No. 124)

The map is approved by the Scientific-Editorial Council of the State Geological Survey of Ukraine on January 23, 2003 (Protocol No. 124)

Expert of the Scientific-Editorial Council: V.V.Zakharov

English translation: B.I.Malyuk

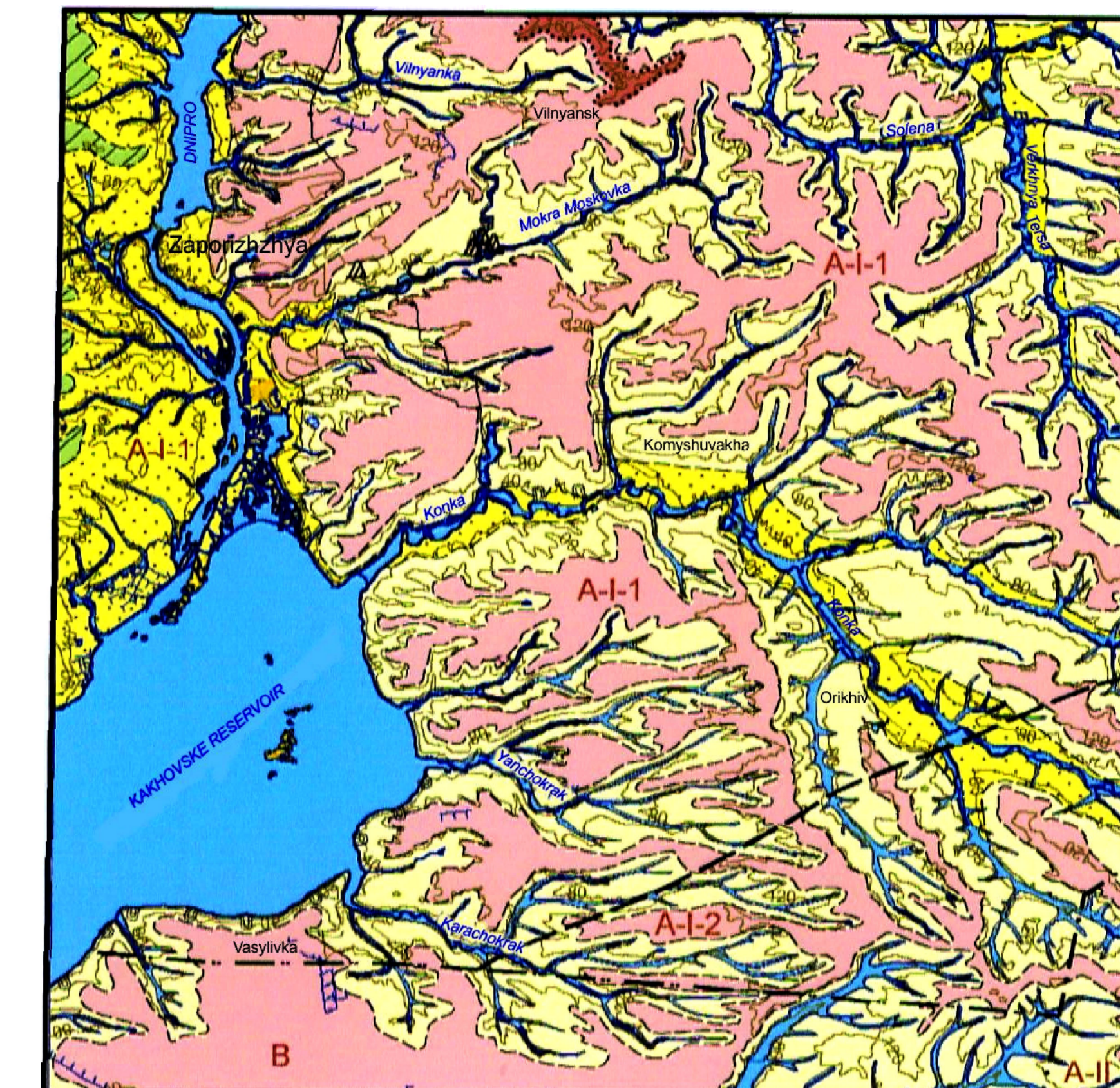
The map is designed and printed by the Ukrainian State Geological Research Institute (UKSGRI) Design editors: leading eng.-cartographer V.G. Shchegolev, geologist G.G. Golubeva, leading eng.-cartographer K.N.Kolychuk

Order 03/05. Edition amount 150 copies. Signed to print on 8 December 2005

© TS ZS of Ukraine, 1997 (geographic base)
© MIA A3796 TS ZS of Ukraine, 1997 (digital map)

© State Geological Survey of the Ministry of Ecology and Natural Resources of Ukraine 2003 (geological contents)
© Ukrainian State Geological Research Institute (UKSGRI), 2005

GEOMORPHOLOGICAL SCHEME



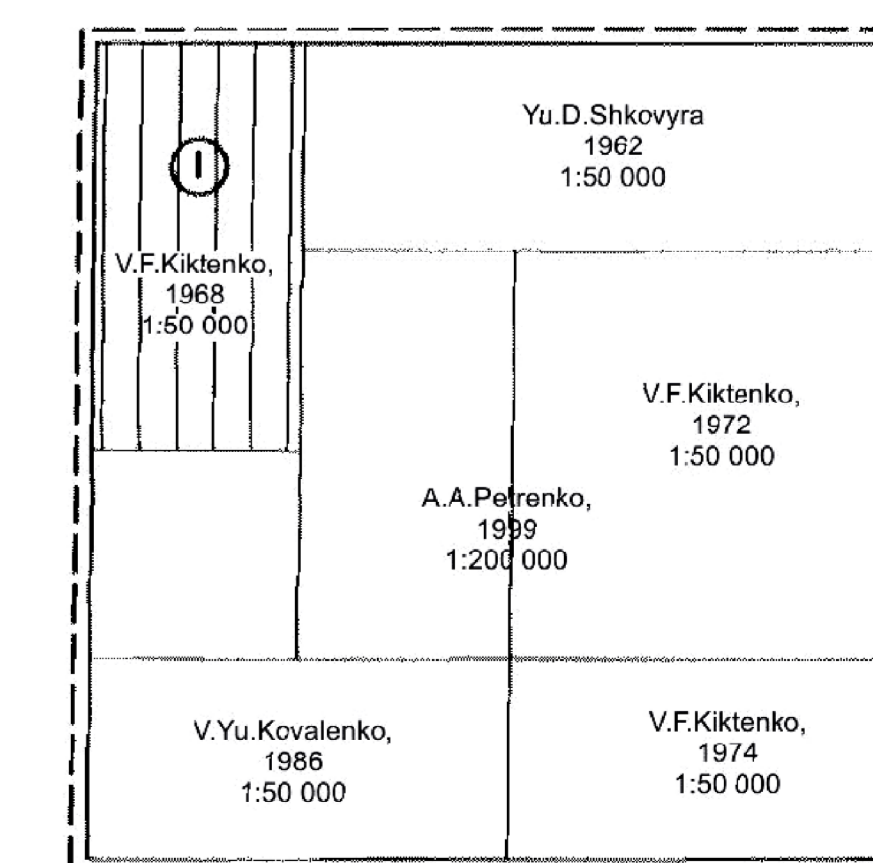
1:500 000
5 kilometres in 1 centimetre

LEGEND

- Structure-denudation relief
 - Non-partitioned surface of plateau over Precambrian base
 - Non-partitioned surface of plateau over Paleogene-Neogene base
- Denudation relief
 - Plateau slopes partitioned by gully-ravine network
- Technogenic relief
 - Quarries
 - Dumps
 - Mounds
 - Faults
 - Slides
 - Mines
 - Tailing ponds
- Geomorphologic zonation boundaries
 - Provinces
 - Regions
 - Areas
 - Boundaries between plateau and slopes
 - Boundaries of non-partitioned plateau on Precambrian and Paleogene-Neogene base
- Erosion-accumulative relief
 - River flood-land and gully bottom
 - Complex of Eo-Pleistocene (a) and Neo-Pleistocene (b) terraces
 - Ravines, cliffs
 - Channels
 - Pipelines

| Province | Region | Area |
|-----------------------------|--|---|
| A Azovo-Prydniprovsk height | A-I Zaporizka plain on Neogene-Cretaceous base | A-I-1 Gulyajivska accumulative partitioned loess plain on Neogene-Paleogene base |
| | A-II Pryzovska height on Precambrian basement | A-II-2 Gulyajivska accumulative partitioned loess plain on Neogene-Cretaceous base |
| B Prychornomorska lowland | B Nyzhnyodniprovsk left-bank accumulative plain on Neogene-Cretaceous base | A-II-1 Pryzovska inclined partitioned accumulative-denudation plain of Precambrian base |
| | | B Tokmatska gently-inclined loess plain |

SKETCH OF GEOLOGICAL MATERIALS USED



Note: see [45a] for all information about drill-holes indicated in the "Geological map and map of mineral resources of crystalline basement" (map sheet L-37-I (Polov) database "Geolukra-2001", 2005